



BULL CHASSIS



33' SLIDER TRI-AXLE CONTAINER CHASSIS



BULL CHASSIS

***This chassis is designed for transporting a 20' ISO container
This chassis meets all DOT, AAR, ANSI, TOFC, FMVSS, SAE and TTMA specifications.***

OVERALL LENGTH: 33' (retracted) or 41' (extended)

OVERALL WIDTH: 96"

FIFTH WHEEL HEIGHT: 48 ± 1"

REAR DECK HEIGHT: 52 ± 1"

KINGPIN LOCATION: 15"

LANDING GEAR LOCATION: 112" (From the kingpin center)

TRIDEM LOCATION: 16" (From rear face of rear bolster to rear axle center when extended)

AXLE SPREAD: 54.5" + 54.5"

TARE WEIGHT: 10,700 lbs ± 2%

PAYLOAD: 67,200 lbs



BULL CHASSIS

MAIN BEAM: Fabricated I-beam with high strength Grade 80 steel.

CROSS MEMBER: 3/16" thick x 3" wide x 9" deep channel with profiled bar type diagonal brace.

SLIDER BEAM: 10" deep x 5" wide fabricated rectangular tube.

UPPER COUPLER: 5/16" pick up plate with JOST 2" diameter square type kingpin per SAE standard, 380- 420 HB, with 2" water drain holes, design to be integrated with main frame through welding.

BOLSTERS: 8" wide x 3/8" thick top plate with 7" wide x 6-3/4" deep x 5/16" thick "U" type bottom channel.

REAR BUMPER: 4" x 4" square tube step with taper "H" section vertical member. Bar is welded to uprights and main beam.

TWIST LOCKS: TOCA 905-130-000-90-LH/RH

LANDING GEAR: AXN FW32E00J with 60,000 lbs capacity, 2-speed 17" travel with low "T" shoes.

Crank handle is located on the driver's side of the chassis. Pre-painted BLACK color. Landing gear brackets are welded on the main beam as the layout.

SUSPENSION: AXN 54.5" tri-axle, underslung configuration with high arch single leaf spring (360-00). Pre-painted **BLACK** color.

AXLES: AXN 5" round axles with 22500lb capacity; 71.5" track, Q+ 16.5"X7" 4707Q brake. Pre-painted **BLACK** color.

1.5-28 spline, **HALDEX** 5.5" automatic slack adjusters.

Reserved PSI interface; Heat Sensing Labels.

Axle Installation orientation: 90 degrees rear, Chambers DOWN (2 abs ready front and rear, 1 non abs mid per unit).



BULL CHASSIS

WHEEL END:

AXN Hub & Drum Assembly P/N H30-0647BFNTZ/H30-0647BFNZ,
STEMCO 358-4009 Integrated Sentinel Grease Hub Cap,

STEMCO seals and bearings.

Spindle nut: **STEMCO Pro-Torq** P/N 447-4743. (5-year warranty wheelend).

LUBRICANT:

Petro Canada precision synthetic EP 00 semi fluid grease lubricant.

WHEELS:

JINGU 22.5 x 8.25 10-stud hub-piloted wheels with 5 hand holes and with TR572 valve stem. Pre-painted **WHITE** color.

TIRES:

WESTLAKE 11R22.5-14PR, tubeless type.

BRAKE SYSTEM:

SEALCO 110800 spring brake priority valve system and
WABCO 4S/2M ABS system;

PHILLIPS glad hand 12-0061 and 12-0081, 3/8" blue air tube for control and 3/8" red for supply. **HALDEX Goldseal** T30/30, 2.5" stroke brake chamber. **FUWA** air tanks.

ELECTRICAL:

PHILLIPS mold seal wiring harness, Reserved PSI and GPS connector. (10-year warranty)

OPTRONICS LED lights (amp connections for S/T/T lights and .180 bullets for others).

The theft proof design used for 4" LED lighting.

ELECTRICAL RECEPTACLE

PHILLIPS 15-7292 zinc alloy material with solid pins.



BULL CHASSIS

DOCUMENT HOLDER: PHILLIPS 16-802. Installed on roadside near crank handle.

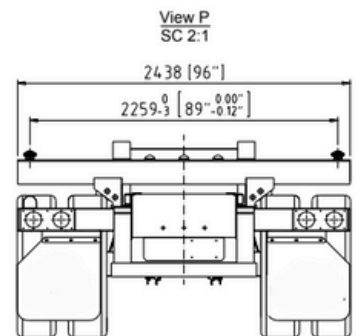
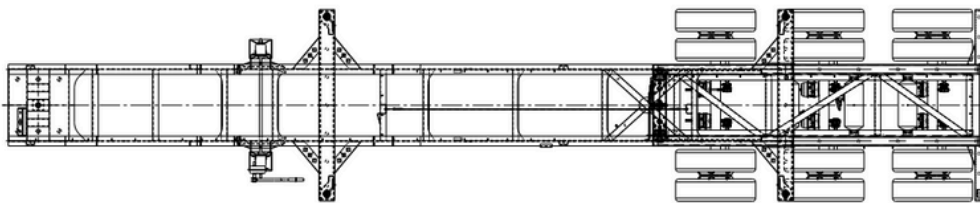
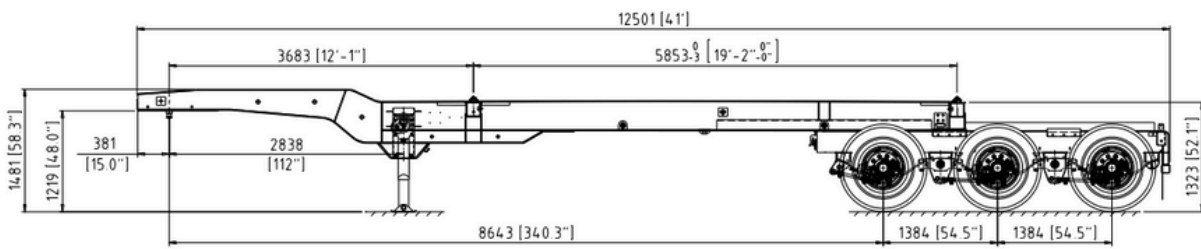
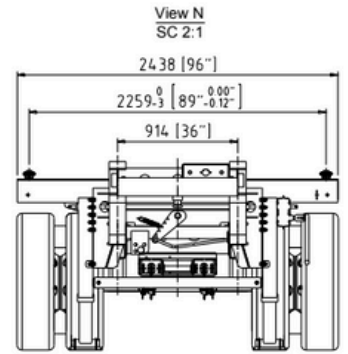
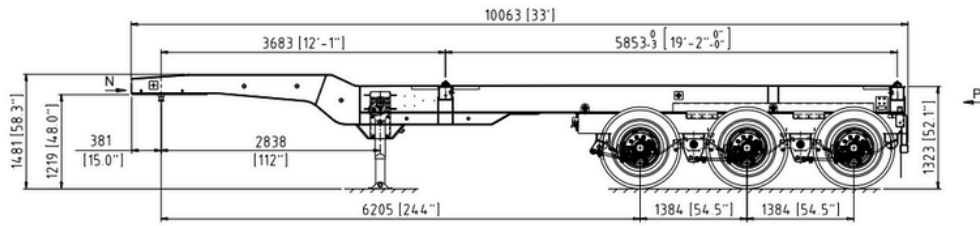
CONSPICUITY TAPE "3M" brand. Installed per federal regulations.

PAINTING: Abrasive blast of all metal surfaces - not less than SA-2.5 to achieve clean bare steel.

Surface will be coated with electrophoresis primer and powder topcoat. Color **BLACK** and at the corner painted **YELLOW** color. Total thickness not less than 80µm after dry membrane. Coating supplier: **NOROO** (7-year warranty).



BULL CHASSIS





BULL CHASSIS

www.bullchassis.com

844-424-2774